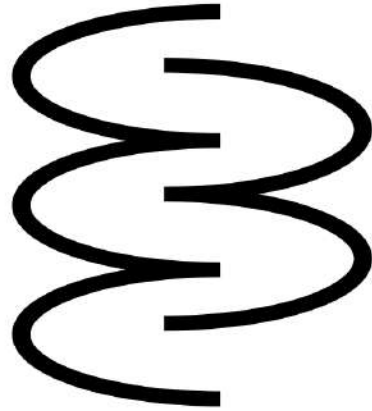


Prospection Tour USA 2024



New York City, New York (USA)

Eyebeam

Link: <https://eyebeam.org/about-us/>

We were one of the first organizations dedicated to supporting artists who create with technology. Since our founding more than 20 years ago, over 500 artists have received support through our flagship fellowship, with hundreds more having participated in our exhibitions and gatherings. We are building from an adventurous legacy and breaking new ground in the role technology can play in our lives by empowering artists concerned about injustice and inequity. Eyebeam.org is our new home, and we are establishing deep relationships with brick-and-mortar friends to powerfully present and amplify the work of our artists.

Smack Mellon

Link: <https://www.smackmellon.org/>

Smack Mellon is a nonprofit arts organization located in DUMBO, Brooklyn. Smack Mellon's mission is to nurture and support emerging, under-recognized mid-career, and women artists in the creation and exhibition of new work by providing exhibition opportunities, studio workspace, and access to equipment and technical assistance for the realization of ambitious projects. We see ourselves as a vehicle whereby under-represented artists can create, explore, and exhibit their creative ideas outside the concerns of the commercial art world, offering many artists the exposure and recognition they deserve.

Pioneer Works

Link: <https://pioneerworks.org/>

Pioneer Works (PW) is an artist and scientist-led 501(c)(3) nonprofit cultural center in Red Hook, Brooklyn that fosters innovative thinking through the visual and performing arts, technology, music, and science.

We provide visual and performing artists, musicians, scientists, technologists, community organizers, and educators the resources and platform they need to expand their practices. Pioneer Works has three floors of interconnected studio, performance, exhibition, and multipurpose spaces, which cultivate collaborations past the boundaries of traditional

institutions by placing makers and thinkers in proximity to each other. We support onsite production through our science, design, recording, and ceramics studios; media, virtual environment, and technology labs; darkroom; and garden. Multi-disciplinary programs, exhibitions, residencies, and performances are presented to the public, of which the majority are free.

White Columns

Link: <https://whitecolumns.org/>

White Columns was founded in 1970 by a group of artists including Jeffrey Lew and Gordon Matta-Clark as an experimental platform for art. Originally located in SoHo (and known as the 112 Workshop/112 Greene Street), the organization was renamed White Columns when it moved to Spring Street in 1980. In 1991 White Columns moved to Christopher Street in the West Village, and in 1998 the gallery relocated to the borders of the West Village and Meat Packing District. In April 2018, White Columns re-opened in a new location at 91 Horatio Street adjacent to the new Whitney Museum of American Art and The High-Line.

The Invisible Dog

Link: <https://www.theinvisibledog.org/>

The Invisible Dog Art Center is housed in a three-story former factory building in Boerum Hill, Brooklyn. Built in 1863, our 30,000 square foot facility was the site of various industrial endeavors, most notably a belt factory that manufactured the famous Walt Disney invisible dog party trick, after which our center is named. The building remained dormant from the mid 1990s until 2009, when our founder Lucien Zayan opened The Invisible Dog.

The Invisible Dog is dedicated to the integration of innovation in the arts with profound respect for the past. In 2009, the building was restored for safety reasons, but special attention was given to the preservation of its original 1863 form. The rawness of the space is vital to our identity.

The ground floor is used for exhibitions, performances, and public events featuring visual artists, performers, and curators from around the world. This floor also includes a store, a home for independent and commercial designers in various fields. The second and third floors are divided into over 30 artists' studios and are integral to the vast creative community of The Invisible Dog.

Fridman Gallery

Link: <https://www.fridmangallery.com/>

Founded in 2013, and located on Manhattan's Lower East Side, Fridman Gallery champions a diverse array of international-contemporary artists and showcases avant-garde exhibitions and performances in various media, including visual and sound art.

The gallery organizes critically acclaimed exhibitions that are challenging both formally and conceptually. These include the first New York solo shows by artists such as Nate Lewis, Nina Katchadourian, Heather Dewey-Hagborg, Remy Jungerman, Wura-Natasha Ogunji, Tajh Rust, Summer Wheat, to name a few. Notably, the gallery curated, and hosted the first-ever solo exhibitions by Dindga McCannon and Milford Graves, whose works have now earned a place in the art-historical canon after decades of neglect by the mainstream art world. Additionally, the gallery actively participates in leading international art fairs, such as Art Basel Miami Beach, the Armory Show, Art Cologne, and Paris Photo.

Empac, Troy, New York (state)

Link: <https://empac.rpi.edu/>

Designed by London-based Grimshaw Architects, EMPAC opened in fall 2008, with the The New York Times declaring, “The concert hall of the 21st century has arrived.” The 220,000-square foot building includes many firsts in the fields of acoustics, performing arts infrastructure, and architectural engineering. The integration of these features with audio, video, lighting, computer, and stage rigging networks makes EMPAC an ideal environment for human interaction with digital media.

Both a performing arts center and research and production facility, EMPAC provides an environment that supports the realization of complex artworks and research projects at any stage, from inception to completion. The EMPAC artist-in-residence program runs year-round, developing new and commissioned projects, many of which receive their premiere here. The Cognitive and Immersive Systems Laboratory (CISL @ EMPAC), a joint initiative with IBM founded in 2015, uses these same spaces and technologies to research new human-computer interfaces.

Buffalo, New York (USA)

Albright Knox Museum, Buffalo

Link: <https://buffaloakg.org/>

Large museum for contemporary and Modern Art, with a vast collection of European (with a focus on Scandinavian art) and Northern American artworks.

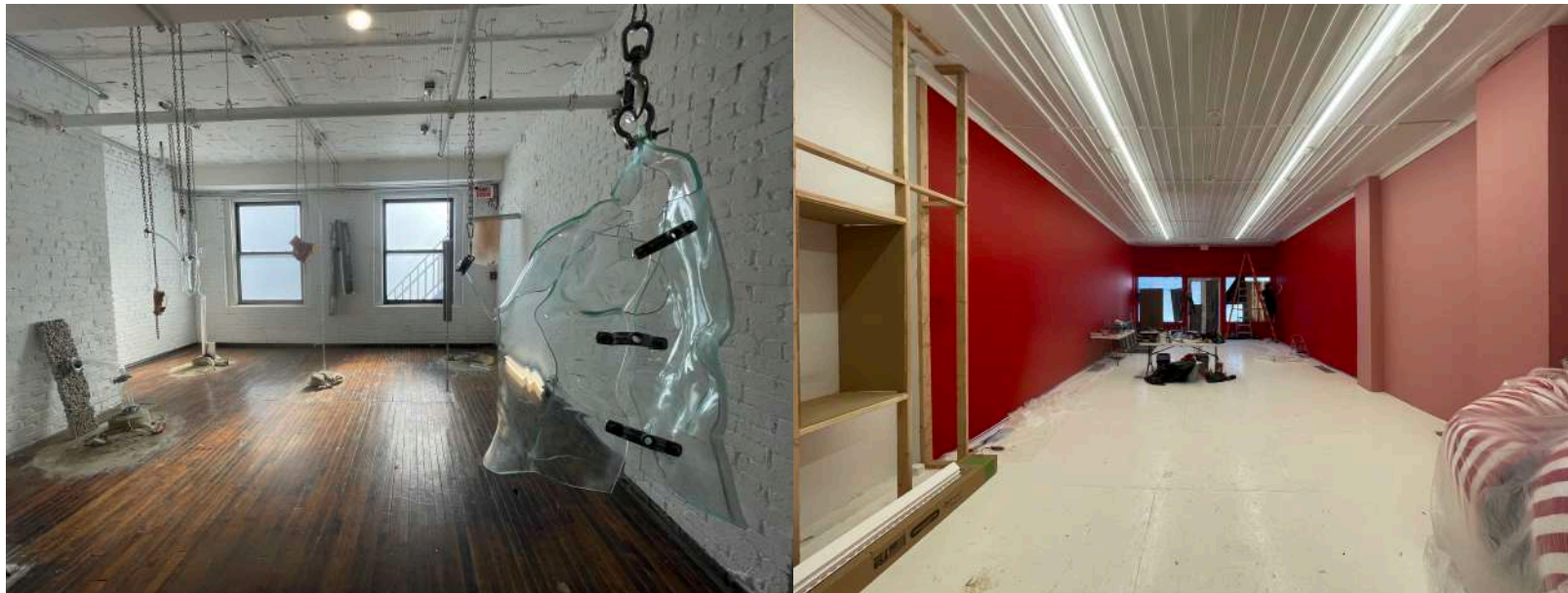
Large Clifford Still collection, as well as a vast collection of Black Artist such as Romare Bearden, Jacob Lawrence, ... and European expressionists.

Pittsburgh, Pennsylvania (USA)

Mattress Factory

Link: <https://mattress.org/>

The Mattress Factory is an artist-centered museum, international residency program and renowned producer and presenter of installation art. We say “yes” to artists, offering time and space to dream and realize projects in our hometown, Pittsburgh, PA. We invite audiences from around the world and around the corner to step inside, immerse and connect with the artistic process. Mattress Factory is dedicated to offer (international) artists time, space and resources to create a solo exhibition in one of their 3 locations, spread out over the historical neighborhood of Pittsburgh.





The residency space has 4 studios, shared kitchen, bathroom and living room in a calm neighborhood.

Next to their main building, Mattress Factory has 2 other spaces in which they organize exhibitions in close relation to their community.

Mattress Factory organizes open call's to invite 1 or more international artists to come and produce a new exhibition with them or they select artists from own research. Lastly they have a focus for regional artists in the larger Pennsylvania state to encourage this small artistic community.

Woodstreet Gallery

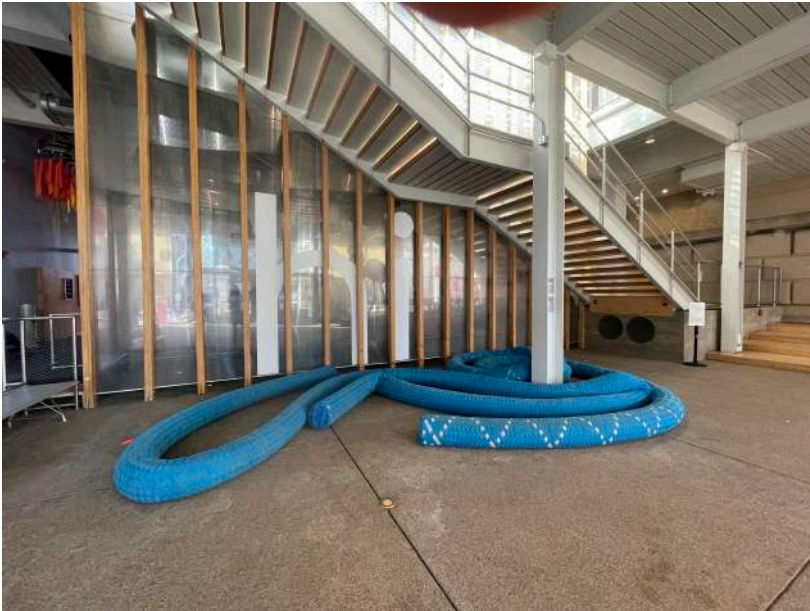
Link: https://trustarts.org/pct_home/visual-arts/wood-street-galleries

Facebook: <https://www.facebook.com/woodstgalleries/>

Wood Street Galleries features contemporary art exhibitions focused on technology and its developments through film, video, robotics, and new media installation. Spanning two floors above Pittsburgh Regional Transit's Wood Street T-station, the galleries often showcase interactive and immersive art by international artists.

The Children's Museum

Link: <https://pittsburghkids.org/>



The Children's Museum of Pittsburgh is a museum dedicated to the explorations and wonderment of children. To create an inspiring world, The Children's Museum invites artists to create new works for the museum through residencies or on a basis of propection. Residencies and open calls are distributed via the website and social media.

Andy Warhol Museum

Link: <https://www.warhol.org/>

The name says it all.

The largest Warhol-collection world wide, with rotating exhibition on the permanent collection in dialogue with other contemporary artists + a focus on contemporary musicians blending different musical styles.

