

(Re)Connecting with the UK - MARCH 2024

Research prospection supported by Kunstenpunt

Margate, Kent



Studio visit Kasia Molga

Links: [https://
www.studiomolga.com/](https://www.studiomolga.com/)

Bio:

Kasia Molga has refused to be labeled- design fusionist, artist, environmentalist, creative coder she is driven by a curiosity how design, science and technology intersect and how art can reveals stories embedded in those intersections. Predominantly focusing on ever changing human relation and perception of natural environment and more than human fellow “earthlings” for over two decades Kasia seeks ways of conveying notion of collaboration with nature. Material and immaterial connections between human body - its health and condition and more than human organisms, the organic, non-binary, biological matter vs digital technologies and care, repair, empathy and inter / intra -species communication are the regular themes. She makes objects, sculptures, audio visual work, immersive experiences, hybrid

interfaces or sometimes simple drawings or illustrated stories. Special attention is paid towards oceans and marine environments. She exhibited worldwide, most notably: Centre Pompidou, Tate Modern, V&A Museum, Ars Electronica, Meta.Morf (NO), Translife Media Arts Triennial (Beijing, China), MIS (Sao Paulo, BR), Dutch Design Week (NL); and is a recipient of many international awards, grants and residencies, among many others: STARTS EU Residency, Wellcome Trust Award, Ars Electronica 2012 Honorary Mention, Creative Industries NL, European N.I.C.E Award, RESHAPE 2017 Honourable Mention, LES RESPIRATIONS 2016 Special Prize. Her work was featured in international press such as Huffington Post, The Guardian, Wired, Dutch Technology Review and BBC.

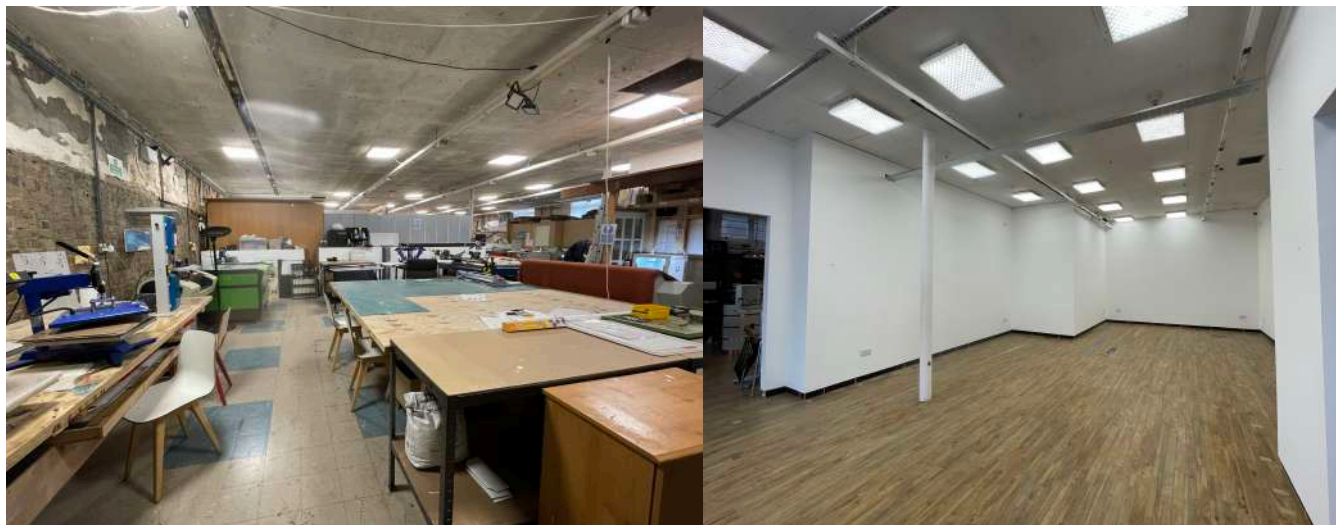
The Margate School

Link: <https://www.themargateschool.com/>

About:

The Margate School (TMS) is an independent not-for-profit postgraduate liberal arts school.

Our theme of Art, Society, Nature, aims to provide socially engaged and sustainability-driven programmes, delivered through knowledge sharing, collaboration and co-creation, peer-to-peer learning, sharing of space and technical facilities and thus enabling creative practitioners to realise their potential in a critically reflective way.





We are rooted in community and connect nationally and internationally; we reach out through our academic programmes, events, workshops, residencies, guest lectures and exhibitions. Much of our provision is subsidised in support of Margate and its diverse creative and wider communities.

Since opening our doors in June 2019, we have welcomed over 16,000 visitors each year to a diverse range of creative events, conferences and exhibitions, hosted over 60 events & exhibitions; supporting artists from diverse and local communities, children and adults with special needs, designers, researchers and professionals.

Inspired by thinkers and makers in the arts, design, the social and natural sciences, humanities and philosophy. TMS is inspired also by the debate around pioneering and so-called 'alternative school' concepts, such as Bauhaus, Black Mountain College, the Summerhill School etc.

Notes:

- > have their own workshop space with tools and materials (3D printing, CNC, bio lab,..)
- > have a large library
- > rent out studio spaces
- > have a presentation space on the lower floor

> open to receive applications for residencies (non funded)

Also in Margate

Tracy Emin Studios - TKE Studios Margate: <https://www.traceyeminfoundation.com/tke-studios>
Turner Contemporary: <https://turnercontemporary.org>
Open School East: <https://openschooleast.org/>

London

Ariane Koek

Link: <https://www.arianekoek.com/>

About:

Ariane Koek is a British independent producer, curator and writer recognised internationally for her transdisciplinary work in arts, science, technology and in the creation of new residency programmes. Often cited as a world leader in the field of arts and science, Ariane Koek is best known for initiating and being the founder of Arts at CERN (2009 - 2015) – the first officially organised international arts programme by CERN the world's leading particle physics laboratory, Geneva, Switzerland. She initiated the programme at CERN as part of her Clore Fellowship in 2009 and The Art Newspaper published the manifesto for the Arts at CERN. She designed and directed the programme which includes the Collide artists residency programmes, Accelerate and Visiting Artists (now known as Guest Artists) for five years and designed CERN's first cultural policy in 2011. During her time at CERN she worked with over 78 artists, including the fashion designer Iris van Herpen who created her Spring/Summer Collection Magnetic Motion based on her CERN visit, Anselm Kiefer, the digital artist and musician Ryoji Ikeda who created two pieces inspired by his Collide residency - Supersymmetry and Micro - Macro, and Julius Von Bismarck who was the first Collide artist in residence.

Arabyte

Link: <https://www.arebyte.com/home>

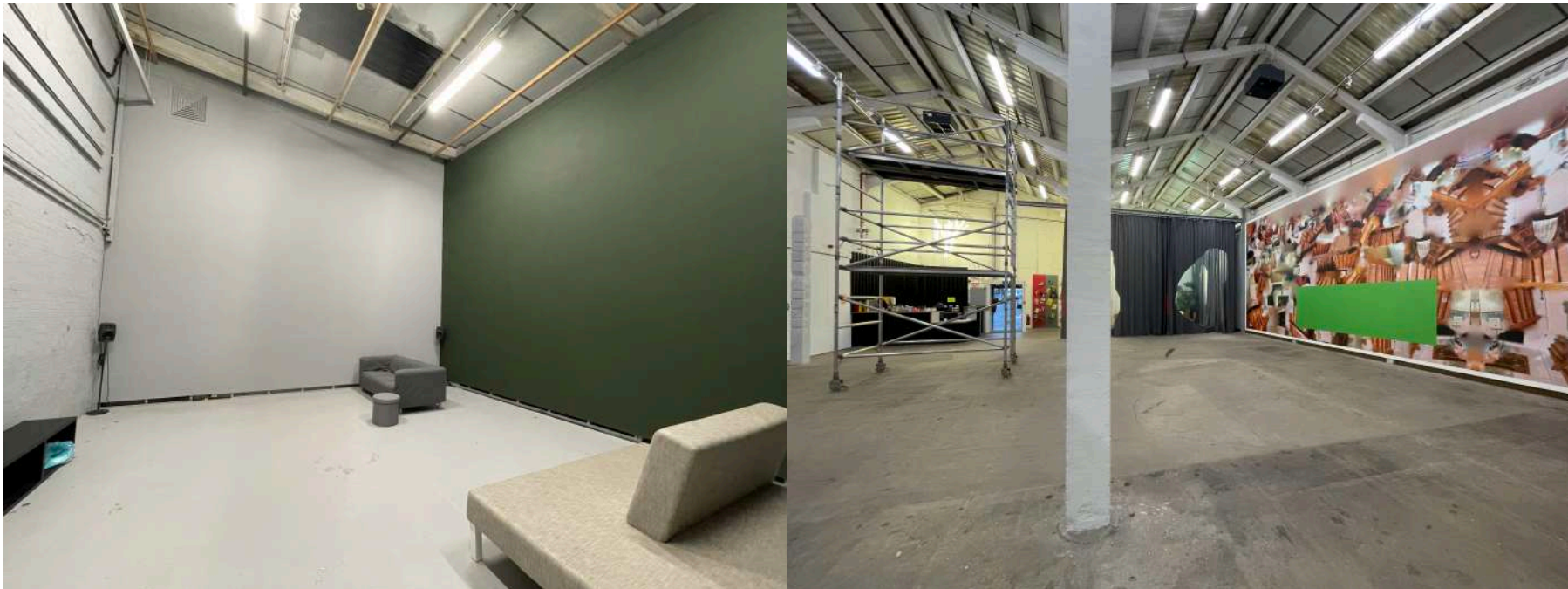
About:

Meeting the growing demand for immersive experiences and digital content creation, arebyte pioneers new forms of engagement with creative technologies, to critically explore the impact of technology in contemporary society. From digital environments, online exhibitions to live performances, arebyte's art programme spans VR, AR, motion capture, CGI, AI, blockchain technology, and draws 10,000 visitors per year to its gallery in East London, with a yearly online audience of 350,000 which is constantly growing.

Birmingham, West-Midlands

Eastside Projects

Link: <https://eastsideprojects.org/>



About:

Eastside Projects is an artist-run multiverse based in a free public gallery in Digbeth. We say multiverse because 'organisation' or 'space' are not enough. We mean that we imagine Eastside Projects as a process, as a place where multiple narratives and experiences coexist, where we make visible an evolving set of possible realities.

We commission artists, make art, think-in-public, curate exhibitions, programme events, work alongside communities, build relationships, create production facilities, support artists, produce public art projects, generate and apply research, develop talent, train artist-curators, and imagine new realities.

Eastside Projects is an evolving process. We believe in working alongside others towards change and do so to support Birmingham. Our programming aims to build active communities of interest who contribute and co-produce, rather than simply consume culture. Since 2008 we have brought world-class art to our city, now we want to build a constellation of collaborators who, with us, will explore and expand the role of the artist in public life & support our city and its citizens.

Together we make art.

Notes:

> collaboration w/ [Kunsthall Gent](#) (Belgium)

Steamhouse, Birmingham University

Link: <https://steamhouse.org.uk/>



About: STEAMhouse is a collective.

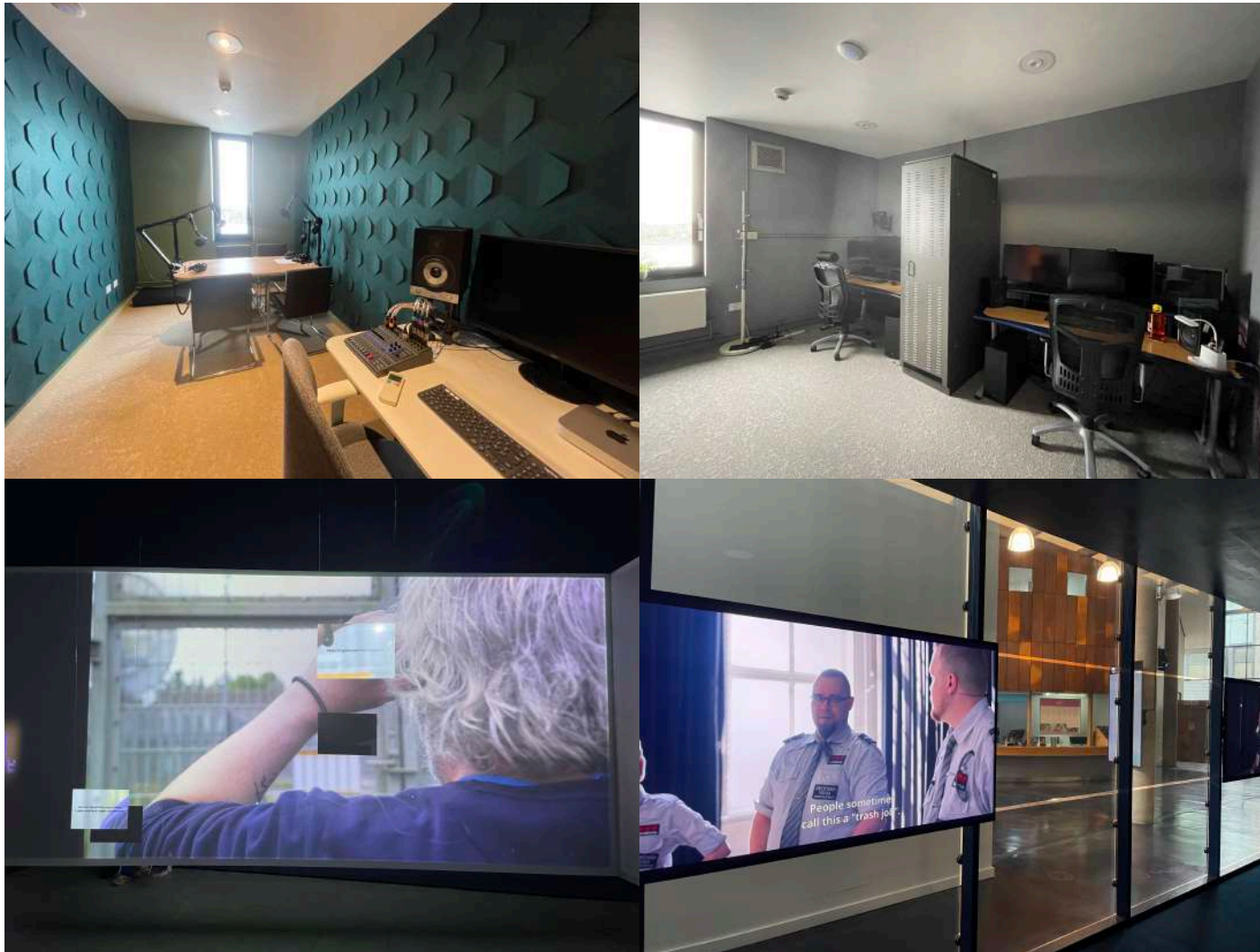
For the business community we provide support to companies of all sizes from sole traders through to large corporations.

We offer production and prototyping facilities for technologists, artists, designers, scientists and innovators. We facilitate workshops for makers, thought leaders and academics. This multi-disciplinary community drives business growth and overcomes commercial and societal challenges through collaborative innovation.

Liverpool, West-Midlands

FACT

Link: <https://www.fact.co.uk/>



About: FACT is a world-leading centre for art, film and the creative use of technology. We champion new ideas and experiences, nurturing the next generation of voices and visionaries to create a world of possibilities. From our award-winning building in Liverpool, we present a vibrant programme of contemporary art that embraces new technology and explores digital culture.

Notes:

- > memberships for local network
- > residencies for international + national network
- > focus on long term relationships + co/production
- > exhibition space

Manchester, Greater Manchester

Whitworth Art Gallery, Manchester

Link: <https://www.whitworth.manchester.ac.uk/>



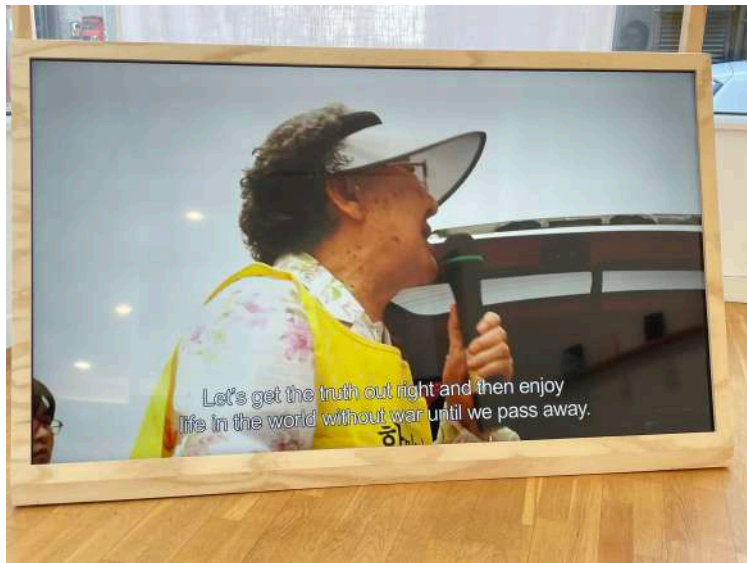
About: The Whitworth is proudly part of The University of Manchester, operating as a convening space between the University and the people of the city. It was founded in 1889 as The Whitworth Institute and Park in memory of the industrialist Sir Joseph Whitworth for 'the perpetual gratification of the people of Manchester' and continues this mission today in new contexts.

Notes:

- > strong emphasis on building relations with local communities
- > embedding art in society
- > cross over between design and art

ESEA Contemporary

Link: <https://www.eseacontemporary.org/>



About: esea contemporary is the UK's only non-profit art centre specialising in presenting and platforming artists and art practices that identify with and are informed by East and Southeast Asian (ESEA) cultural backgrounds.

esea contemporary is situated in an award-winning building in the heart of Manchester, home to one of the largest East Asian populations in the UK. Since its inauguration as a community-oriented visual arts festival in 1986, esea contemporary – previously named Centre for Chinese Contemporary Art – has continuously evolved to establish itself as a dynamic and engaging space for cross-cultural exchanges in the British art scene, as well as in a global context.

esea contemporary aims to increase the visibility of contemporary art practices from the East and Southeast Asian communities and their diasporas. It is a site for forward-thinking art programmes that beyond exhibitions also include commissions, research, residencies, publishing, and a wide range of vibrant public events. esea contemporary values creativity, compassion, interconnectedness, and collectivity in implementing its mission.

Future Everything

Link: <https://futureeverything.org/>

About: At FutureEverything, we strive to be at the forefront of digital culture, harnessing art and participatory experiences as a lens to reflect on the world around us.

Evolving from an annual festival into a year-round cultural programme, we're passionate about bringing people together to discover, share and experience new ideas for the future. Exploring the intersection of technology, art and culture since 1995. Regularly co-commissioning, curating and producing public art and large-scale cultural events. Nurturing talent through residency opportunities and design labs. Creating space for learning and collaboration with organisations and communities to understand complex issues, and co-create possible solutions. Connecting with a global community of artists, technologists, thinkers, and policy makers

Notes:

> have no exhibition space, work with third parties as exhibition partner

AND-Festival

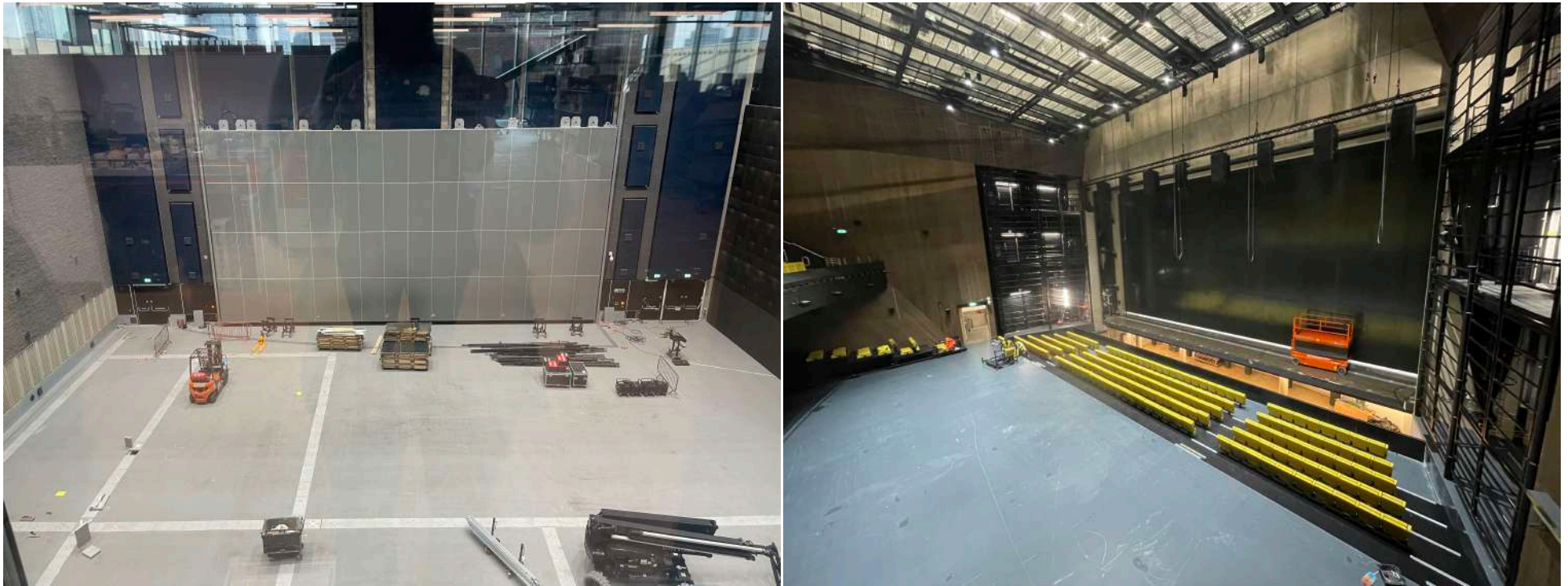
Link: <https://www.andfestival.org.uk/>

About: And-Festival commissions and showcases extraordinary art where it's not usually experienced: from caves and carparks to forests and ferries, and from multiplayer platforms and mines, to observatories and online portals.

The programmes are always interactive, whether online or in person.

They are responsive to time, place and people, featuring public realm interventions, live research, exhibitions, performances, films, online projects and live labs.

And-festival creates experiences that are unprecedented, unexpected, unpredictable, absurd, wild and joyful.



The Factory International

Link: <https://factoryinternational.org/>

About: Producers of extraordinary art from world-renowned figures to Manchester's rising stars.

Whether you're into music, dance, performance, theatre, exhibitions or gaming, we've got something for you. But don't expect your run-of-the-mill programme – we pride ourselves on bringing different artists and types of art together. This is Manchester, after all – a city with a history of innovation that's hard to beat.

With our vision to invent tomorrow together, we've always got an eye on the future. We're all about new ways of creating and collaborating to bring you unforgettable art and experiences. At our new home Aviva Studios, you'll find a year-round programme that does just that.

Every two years we run Manchester International Festival (MIF) – the festival of brand new artistic work known world-over, that's animated and captivated our city since 2007. We're also training the creative workforce of the future through the Factory Academy, supporting artists to realise their potential, and working with local communities to build our programme.

And we don't stop at Manchester – we take our work to partner venues and festivals all around the world and create extraordinary digital experiences – inviting everyone to play in our virtual world.

